



Quality Tools for Smart Cleaning



**ASSEMBLY INSTRUCTIONS • AUFBAUANLEITUNG**  
**INSTRUCTIONS DE MONTAGE • ISTRUZIONI DI MONTAGGIO**  
**INSTRUCCIONES DE MONTAJE • MONTAGEHANDLEIDING**

**DOUBLE BUCKET KIT • DOPPELFAHREIMER SET**  
**KIT DOUBLE SEAUX • KIT SECCHIO DOPPIO**  
**KIT DE CUBOS DOBLES CON RUEDAS •**  
**DUBBELE MOPWAGEN KIT (CLBK1D)**



**[EN] OmniClean DOUBLE BUCKET KIT**

1. OmniClean Telescopic handle without tank, straight
2. OmniClean Pad mop holder 40 cm
3. OmniClean Microfibre pad 40 cm (CLMFPD)
4. OmniClean Cart with straight handle
5. Bucket 6 l (clean water)
6. 6 l bucket with integrated scrub board (dirty water)
7. Labels for colour coding

**[FR] KIT DOUBLE SEAUX OmniClean**

1. Manche télescopique OmniClean sans réservoir, droit
2. Mop à scratch OmniClean, porte mop 40 cm
3. Pad à scratch en microfibre OmniClean 40 cm (CLMFPD)
4. Chariot OmniClean avec poignée droite
5. Seau 6 litres (eau sale)
6. Seau de 6 litres avec planche à laver intégrée (eau sale)
7. Étiquettes pour le code couleur

**[ES] OmniClean KIT DE CUBOS DOBLES CON RUEDAS**

1. Mango telescópica OmniClean sin depósito, recta
2. Soporte para mopa con cierre por contacto OmniClean 40 cm
3. Mopa de microfibra con cierre por contacto OmniClean 40 cm
4. OmniClean Cart con mango recto
5. Cubo de 6 l (solución de limpieza)
6. Cubo de 6 l con tabla de lavar (mezcla de detergente y suciedad)
7. Etiquetas para la codificación por colores

**[DE] OmniClean DOPPELFAHREIMER SET**

1. OmniClean Teleskopstiel ohne Tank, gerade
2. OmniClean Klettmopp Padhalter 40 cm
3. OmniClean Mikrofaser Klettpad 40 cm (CLMFPD)
4. OmniClean Cart mit geradem Handgriff
5. Eimer 6 l (Reinigungsflotte)
6. Eimer 6 l mit integriertem Waschbrett (Schmutzflotte)
7. Etiketten zur Farbcodierung

**[IT] KIT SECCHIO DOPPIO OmniClean**

1. Manico telescopico OmniClean senza serbatoio, dritto
2. Panno a strappo OmniClean supporto pad 40 cm
3. Pad a strappo microfibra OmniClean 40 cm (CLMFPD)
4. Carrello OmniClean con maniglia dritta
5. Secchio 6 l (prodotti per la pulizia)
6. Secchio da 6 l con lavello integrato (acqua sporca)
7. Etichette per la codifica a colori

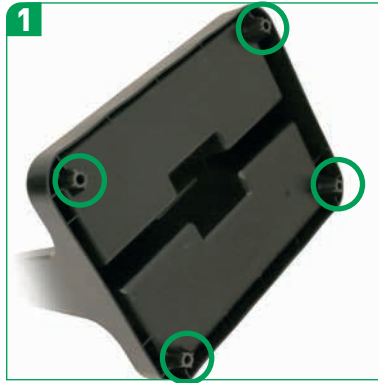
**[NL] OmniClean DUBBELE MOPWAGEN KIT**

1. OmniClean telescoopsteel zonder tank, recht
2. OmniClean mopframe met klittenband 40 cm
3. OmiClean microvezelmop met klittenband 40 cm (CLMFPD)
4. OmniClean Cart met rechte handgreep
5. 6 l emmer (voor schoon water)
6. 6 l emmer met geïntegreerd schrobbord (vuile water)
7. Labels voor kleurcodering



OmniClean

Essential Assembly • Grundmontage • Assemblage de base  
Montaggio di base • Montaje básico • Basismontage

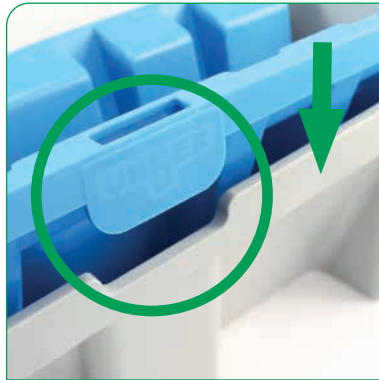
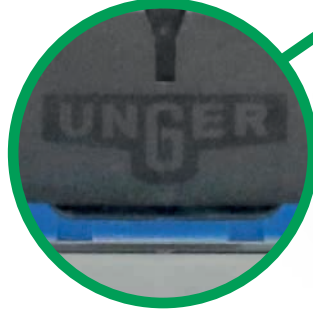
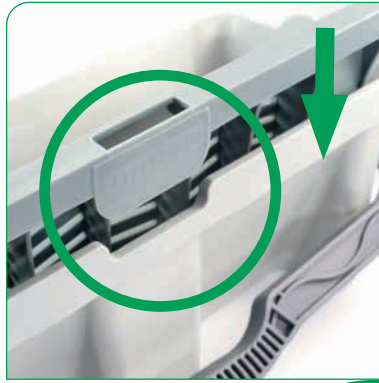




Quality Tools for Smart Cleaning

OmniClean

Dual Bucket Kit • Doppelfahreimer Set • Kit double seaux • Kit secchio doppio • Kit de cubos dobles • Dubbele mopwagen kit



Unger Germany GmbH  
Piepersberg 44  
D-42653 Solingen  
GERMANY  
Fon +49 (0)212 / 22 07-0  
Fax +49 (0)212 / 22 07-222  
ungereurope@ungerglobal.com

Unger UK Ltd.  
F1 Deansgate, 62-70 Tettenhall Road  
Wolverhampton, WV1 4TH  
UNITED KINGDOM  
Fon +44 (0)1902 306 633  
Fax +44 (0)1902 306 644  
ungeruk@ungerglobal.com

Unger Enterprises LLC  
425 Asylum Street  
Bridgeport, CT 06610  
USA  
Tel.: (1) 800.431.2324  
Fax: (1) 800.367.1988  
unger@ungerglobal.com

www.ungerglobal.com



22272