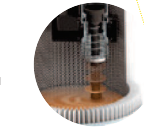


TANGENTIAL INLET FOR BETTER DUST SEPARATION FROM THE FILTER

CONTAINER, FILTER CHAMBER AND TOP COVER MADE IN AISI 304 STAINLESS STEEL IN ACCORDANCE TO ATEX STANDARD

STORAGE CONTAINER

SEMI-AUTOMATIC FILTER CLEANING SYSTEM WITH A PNEU-MECHANICAL PISTON



TANK QUICK RELEASE FOR FAST DISPOSAL



**STANDARD VERSION**  
SURFACE 13.000 cm<sup>2</sup>

SECONDARY HEPA FILTER (OPTIONAL)

M CLASS CONDUCTIVE ALUMINIZED PRIMARY CARTRIDGE FILTER

CYCLONE FOR INCREASED FILTER EFFICIENCY

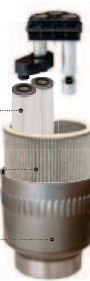


**MAXI VERSION**  
SURFACE 18.000 cm<sup>2</sup>

SECONDARY HEPA FILTER (OPTIONAL)

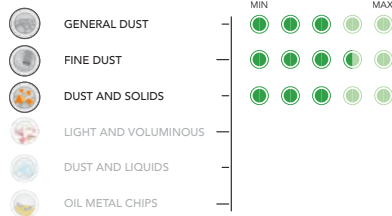
M CLASS CONDUCTIVE ALUMINIZED PRIMARY CARTRIDGE FILTER

CYCLONE FOR INCREASED FILTER EFFICIENCY



Pneumatic industrial vacuum cleaner ideal for general aspirations in all areas of application. Its maneuverability and compact dimensions make the move easy even in the most difficult places to reach.

**WORK EFFICIENCY**



TYPE OF APPLICATION: DUST

DEGREE OF SPECIFICITY: 5/5

**TECHNICAL DATAS**

	S PN AtEx 2-22	S PN MAXI AtEx 1-21	PRO AtEx 1-21	SP N MAXI AtEx 1-21
SUCTION UNIT	VENTURI	VENTURI	VENTURI	VENTURI
SUPPLY PRESSURE	4 - 6 Bar	4 - 6 Bar	4 - 6 Bar	4 - 6 Bar
AIR CONSUMPTION	1500 l/min	1500 l/min	1500 l/min	1500 l/min
FILTER SHAKER	SEMI - AUTO	SEMI - AUTO	SEMI - AUTO	SEMI - AUTO
FILTER CLASS	13000 Cm <sup>2</sup>	18000 Cm <sup>2</sup>	18000 Cm <sup>2</sup>	18000 Cm <sup>2</sup>
STANDARD FILTRATION	M	M	M	M
FILTRATION OPTIONAL	M + HEPA	M + HEPA	M + HEPA	M + HEPA
AIR FLOW	380 m <sup>3</sup> /h	380 m <sup>3</sup> /h	380 m <sup>3</sup> /h	380 m <sup>3</sup> /h
MAX DEPRESSION	280 mBar	280 mBar	280 mBar	280 mBar
VACUUM VALVE	380 mBar	380 mBar	380 mBar	380 mBar
CAPACITY	50 L	50 L	50 L	50 L
DIMENSIONS	80X60 h 115 cm	80X60 h 125 cm	80X60 h 125 cm	80X60 h 125 cm
WEIGHT	64 Kg	64 Kg	64 Kg	64 Kg

TANGENTIAL INLET FOR BETTER DUST SEPARATION FROM THE FILTER

STORAGE CONTAINER

BIGGER REAR WHEELS

CONTAINER, FILTER CHAMBER AND TOP COVER MADE IN AISI 304 STAINLESS STEEL IN ACCORDANCE TO ATEX STANDARD

LONGOPAC® CONTINUOUS BAG COLLECTION SYSTEM 22 METERS



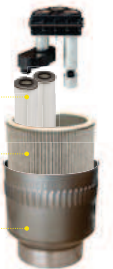
SEMI-AUTOMATIC FILTER CLEANING SYSTEM WITH A PNEU-MECHANICAL PISTON



SECONDARY HEPA FILTER (OPTIONAL)

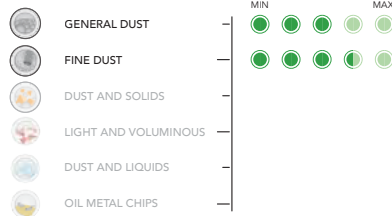
M CLASS CONDUCTIVE ALUMINIZED PRIMARY CARTRIDGE FILTER

CYCLONE FOR INCREASED FILTER EFFICIENCY



Pneumatic industrial vacuum cleaner suitable for the suction of dust collection system equipped with LONGOPAC®. The disposal of the aspirated material is facilitated by the use of collection bags, that, once sealed, does not allow the dispersing of contaminating particles in the environment, representing a further safety for the operator's health.

**WORK EFFICIENCY**



TYPE OF APPLICATION: DUST

DEGREE OF SPECIFICITY: 5/5

**TECHNICAL DATAS**

	PN BAG AtEx 2-22	PRO AtEx 1-21	PN BAG AtEx 1-21
SUCTION UNIT	VENTURI	VENTURI	VENTURI
SUPPLY PRESSURE	4 - 6 Bar	4 - 6 Bar	4 - 6 Bar
AIR CONSUMPTION	1500 l/min	1500 l/min	1500 l/min
FILTER SHAKER	SEMI - AUTO	SEMI - AUTO	SEMI - AUTO
FILTER CLASS	18000 Cm <sup>2</sup>	18000 Cm <sup>2</sup>	18000 Cm <sup>2</sup>
STANDARD FILTRATION	M	M	M
FILTRATION OPTIONAL	M + HEPA	M + HEPA	M + HEPA
AIR FLOW	380 m <sup>3</sup> /h	380 m <sup>3</sup> /h	380 m <sup>3</sup> /h
MAX DEPRESSION	280 mBar	280 mBar	280 mBar
VACUUM VALVE	380 mBar	380 mBar	380 mBar
HARVESTING SYSTEM	LONGOPAC®	LONGOPAC®	LONGOPAC®
DIMENSIONS	80X60 h 155 cm	80X60 h 155 cm	80X60 h 155 cm
WEIGHT	87 Kg	64 Kg	64 Kg